

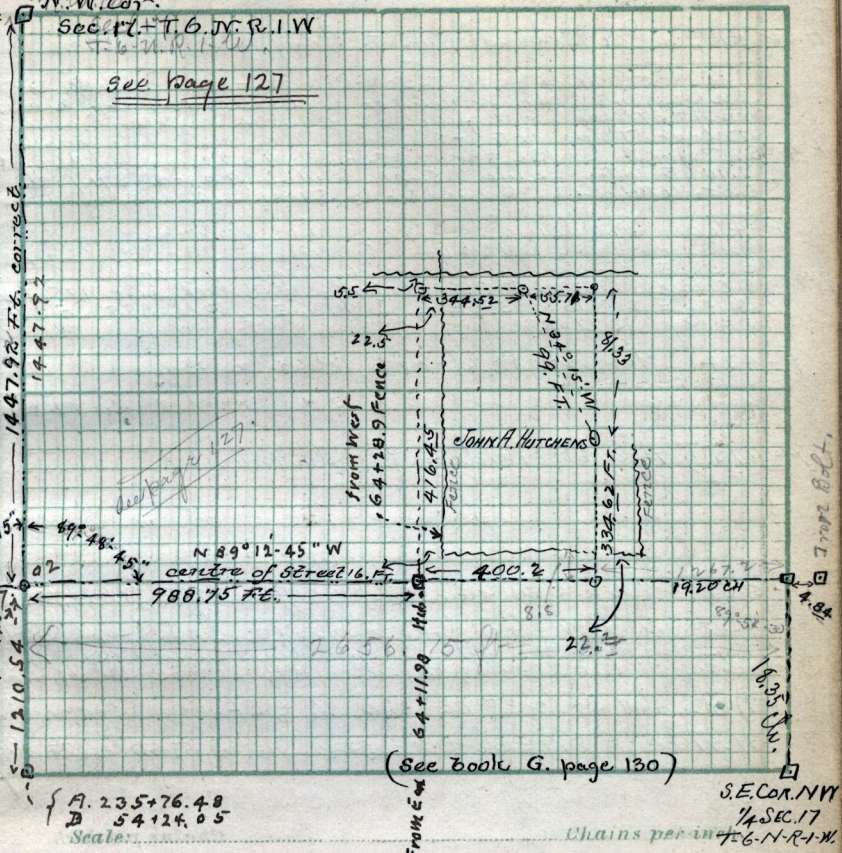
Cedar stake
to surface
of ground.

N.W. Cor.

Sec. 17 T. 6. N. R. 1. W.

see page 127

2658.46 ft corrected = N 0° 58' 30" E
50° 51' 30" N. To cc
Sec. 17
1447.98 ft. correctd
1447.92



A. 235+76.48
B. 54124.05

Scale:

Chains per in

S.E. COR. NW
1/4 SEC. 17
T. 6. N. R. 1. W.

(See Book G. page 130)

Surveyed for John A. Hutchens. January 5-1891 -
Pt. N.W. 1/4 Sec 17 T. 6. N. R. 1. W.

A pipe 198. ft N. & S. by 57.25 ft E & W. of the S. E.
corner of the above tract to be conveyed by
John A. Hutchens & wife Lois Hutchens to
Jos. A. Hutchens. \$400.

0-117